

IMPORT BBO / REAL BRIDGE EVENTS TO COMPSCORE3

This document describes the process to import the *.CS2 files produced by **Matthew McManus's Converter** to an event in Compscore3. Note that this document applies only to events (e.g. Swiss Pairs / Teams etc) – the process to import converted files for single sessions is explained in other documentation.

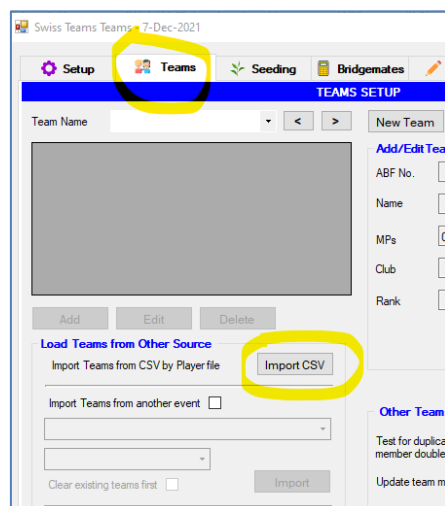
Ass with single session on-line events, the files produced by the Converter will be found in the Compscore3\Exports folder. For Pairs events there will be one file for each match. For Teams events there will be one file per match and one overall file per session.

1. Create the Event as normal

Create the Pairs or Teams event in Compscore2 as you normally would. Just the **Setup** tab needs to be completed – the import process will complete the Pair / Team names etc.

2. Teams Events only – Import and Review teams

The complete list of teams and players is held in the most recent Overall file, so for a two session event, it will be called something like “Overall – Qld Swiss Teams – Session 2.CS2”. Import this as you would a web site download of team names and team members, i.e. on the **Teams** tab, click **Import CSV**, and navigate to the latest overall *.CS2. See pic at right. This will add all teams and team members. It will then work through the imported teams looking for invalid or blank ABF Numbers and will add an asterisk to each such team member. You can then click **Duplicates to check** for any asterisked or duplicated players. You should then resolve each one in the usual way to ensure duplicates are removed and that all players have an ABF Number.



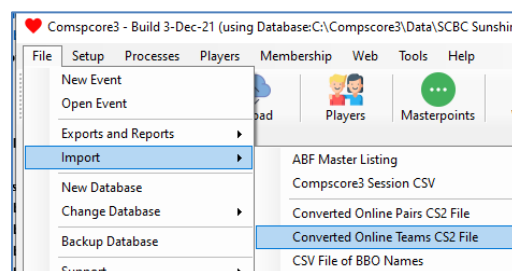
Once done, click on **Datums** (this sets up the internal Datums tables), then close the Datum Management and Event forms.

3. Import the converted files

Ensure the Teams Event form is closed.

You will have multiple *.CS2 files from the Converter process – one for each match. Remember to ignore the “overall” files for Teams events – they are only used in Step 2 above.

Each of these match files (not the overall files) needs to be imported into Compscore2 in the same way as for sessions i.e. under the **File | Import** menu. There are two menu options - one for Pairs (BBO or Real Bridge) and one for Teams (Real Bridge only) – see pic at right.



Add the deal file to the session by opening the session, clicking **Advanced** on the Setup tab, selecting Deal Files and navigate to the PBN file for the session, and click **Import**. This will attach the deal file to the session, so the hand is display on the web site.

4. Convert imported sessions to Event Matches

Once you have imported all Match files, click on **Open** on the main form, and the matches you've just imported will be displayed as sessions. Right click the Match 1 session and choose **Assign Session as Event Match** from the popup menu. Select the Event you have created (it should be at the top of the list), and when prompted, enter the Match Number. Once converted, it will disappear from the Session list. Repeat this process for each Match in order.

5. Review the event

Open the Event form. All matches should now appear on the Bridgemate tab.

Click **Calculate**, with Rescore all rounds [x] ticked.

All that is the same for Pairs and Teams. For Teams events there is one more step.

6. Teams Events – Calculate Pair Datums

When you imported each match, the seating would also have been imported. On the Bridgemates tab click **Datums**. Important – you need to have performed the Calculate process described above before accessing pair datums.

On the Datums Management form, click **Problems**. This will show any teams for which the seating could not be determined. This can happen for a number of reasons – possibly a player changed their name or ABF Number part way through a session, or a substitute was inserted. Fix any problems as you would for a traditional event, then click **Calculate**.

That's it!

The whole event should be as though it was run as a traditional congress event, and you can create web export files and calculate masterpoints as you would for a traditional congress event.

C:\Documents\Bridge Club\Compscore3\ConvertingOnlineEventsToCompscore3 .docx