

## UPDATING YOUR BRIDGEMATE SOFTWARE

There are three things you need to upgrade when loading the latest Bridgemate software:

- **Bridgemate Control Software (BCS)** – the program that sits between Compscore3 and the Bridgemates;
- **Bridgemate server firmware** – that small white box with two green lights,
- **Bridgemate firmware** – the actual tabletop devices.

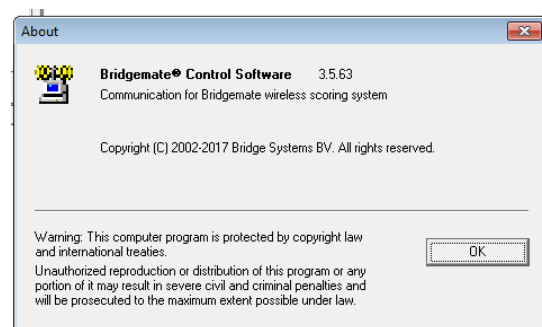
All updates can be downloaded from the Support page on the Bridgemate web site ([www.bridgemateaustralia.com](http://www.bridgemateaustralia.com) or [www.bridgemate.com](http://www.bridgemate.com)).

These three elements of the Bridgemate should be in synch. However, the BCS is downward compatible meaning that the latest version can work with all older versions of the server and Bridgemate firmware, but the reverse is not always true. It is more important however that the Bridgemates and Bridgemate server are on compatible firmware versions.

Note that the version numbers are not identical. At the time of writing, the BCS latest build is 3.9.6, but the server firmware and Bridgemate firmware are 3.1.1 or 3.1.1d.

### BRIDGEMATE CONTROL SOFTWARE

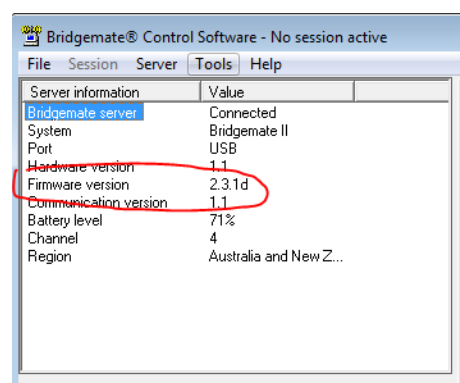
The BCS is updated like any other Windows program – click the link on the web site and follow the prompts. The same download will install the BCS on a new PC or update an existing one. Ensure the BCS is currently closed, and follow the program after downloading. Afterwards you can check the version of the BCS by clicking Help | About.



### BRIDGEMATE SERVER

The server update is simply a small executable file called, for example, usbs311d.exe. Ensure your Bridgemate server is attached to the PC via the USB lead, and run the downloaded file, usually by double-clicking it. You will be asked to choose your language then the update will be done. I will take just a few seconds.

Afterwards you can check the version of the server firmware by launching the BCS with the Bridgemate server attached, and checking the setting in the top left panel.



### BRIDGEMATES

The steps to update the Bridgemate firmware are:

- load the firmware into the Bridgemate Control Software
- transmit the firmware; then

- activate each Bridgemate and download the update.

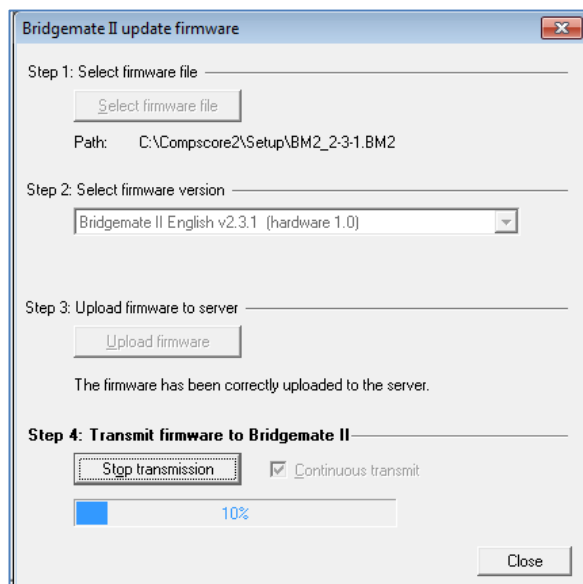
In the BCS, choose the menu option **Tools | Bridgemate | Update Bridgemate II Firmware**. This presents the Update form as pictured.

**Step 1** – Select the firmware file. This is one of the files you downloaded from the Bridgemate web site. It will end in BM2 for example BM2\_2-3-1.BM2.

**Step 2** – Select firmware version – choose English.

**Step 3** – Upload the firmware file – this prepares it for transmitting

**Step 4** – Transmit – this transmits the file so that the Bridgemates can receive it.



Next, select the first Bridgemate, and enter the Setup area by pressing the SETUP button, then choose INFO and then UPDATE and press OK to start the update.

A progress meter will appear on the screen indicating how the download is going. It will take about 30 seconds.

You do not need to wait for the update on one Bridgemate to finish – other Bridgemates can be updated simultaneously.

When the update has finished, the Bridgemate will return to the usual “Bridgemate II” start screen.

When all Bridgemates have been updated, click Finish on the BCS form to end transmitting.

Afterwards you can check the version of the Bridgemate firmware by checking the version number on the bottom of the initial “Bridgemate II” screen.

