

# CS2 Advanced Training - September 2015



## Running a duplicate session

- **Running a session with Bridgemates** – see documents on Manual and Help page of web site

*Running a Bridgemate Session*

- **When things go wrong** - see documents on Manual and Help page of web site *When things go wrong* (includes power outage or BCS gets closed, also late pair, losing a pair), concept of Relaunch, not Launch

- **Editing a result in Compscore2** - Checkboxes for Fouled board / Arrowswitched, also Average, and Matchpoint / Imp override

- **Resend names to Bridgemates** option – this sends any changed names back to the room. Do not do this till all tables have entered their names.

Also, you can add pairs manually, but the default number for the new pair may need to be edited by clicking *Renumber* afterwards.

- **Curtailing** – best way is to do this under *Advanced – BWS Functions*. It can be done this

way any time. Can also be done at the completion of the session from the *Print Reports and Web* tab. However, if it's done after any table has finished, go to each Bridgemate and press OK till the "End of Session" message appears.

- **Median rank** for master factor if sessions is restricted by masterpoints – under *Advanced | Miscellaneous*.

- **Single session teams** – same as Howell, except there is an option to have player numbers entered at first table – this is better, but is necessary for unusual teams movements

Table Number	To Play
Table 1 (Martin / Ward)	4
Table 2 (Niesler / Stearn)	4
Table 3 (Meddows / Kaszas)	2
Table 4 (Alder / Wilson)	4
Table 5 (Hardy / McLardy)	4
Table 6 (Clark / Burbury)	4
Table 7 (Friedman / Gibson-Collin)	4
Table 8 (Catsburg / Buchanan)	4
Table 9 (Muir / Schofield)	4

- **Outstanding tables display** on *Print Reports and Web* tab – shows results outstanding per table. Better than BCS because it also includes tables with no results entered.

- **BMPlayerDB** setup for when players enter ABF No's, including tricks re BCS setting up BCS – see web site Help page *Using BMPlayerDB when entering ABF / NZ Bridge Numbers*

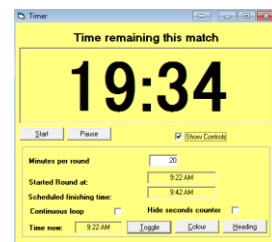
- **Penalties and Adjustments** – can be entered on *Print Reports and Web* tab – enter penalty as minus

- **Show Live Results** – display updated session results in real time during the session. Note that results very early in a session can look odd. Not relevant for across-the-field scoring as it shows individual sections

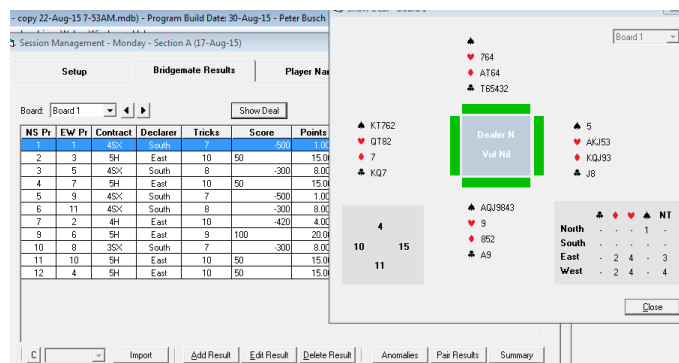
- **Manual scoring** – tick box on Session Setup form, then create blank travellers, then enter scores (no trailing zero, and precede EW with a minus), then enter player numbers

NORTH-SOUTH			EAST-WEST		
Place	Players	%	Place	Players	%
1	Roman Pawlyszyn / Beth Nielson	58.03	1	Don Sanderson / Geoff Olsen	67.42
2	Kiyomi Avunduk / Margaret Robertsc	56.06	2	Bob Small / Joan Coughlan	59.55
3	Jill Boyd / Pat Hinchliff	55.76	3	Nancy Simmons / Judy Johnstone	55.15
4	Val Colless / Adriana Kienhuis	52.12	4	Ann Kibble / Catherine Griffiths	52.73
5	Bev Northey / Drew Campi	50.15	5	Heather Finlayson / Harry Walsh	51.82
6	Wendy Mansfield / Lex Bourke	49.70	6	Sue Bredhauer / Susanna Thompson	50.30
7	Beth Spork / Jill Cameron	49.39	7	Barbara Clay / Janice Waddell	47.73
8	Sue Kirk / Mary De Wet	49.24	8	Irene Pawlyszyn / Ruth Church	47.27
9	Pam Vickers / Debra Niesler	47.12	9	Hugh Johnston / May Johnston	43.33
10	Audrey Madsen / Noel Madsen	42.88	10	Dianne Thatcher / Moira Smith	41.21
11	Bob Berry / Gaye Poll	39.55	11	Jan Dale / Nancy Cook	33.48

- **Timer** (under Processes menu) – can be set for minutes per round (with continuous option) or for set finishing time
- **Board mapping** (under Advanced | Board Mapping) – useful for misplaced by-stands
- **Loading in deal files** (BRI, TXT, PBN) - can be manually imported under Advanced | Deal Files, or if the right file is found when the deal file is entered under Session Setup, it is

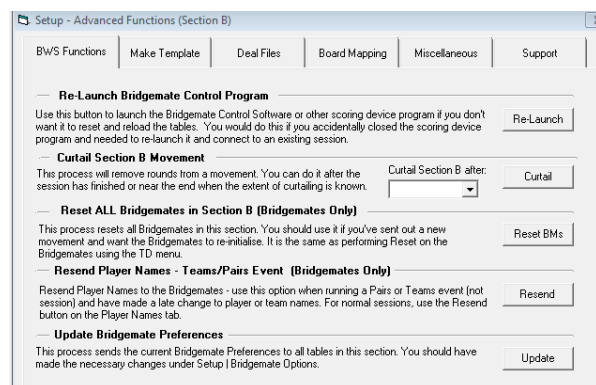


- **Moving players between sessions / events** – display the *Import from Another Event* controls on the Names tab (option under *Setup | Preferences Congress Directors*). Can be used to move pairs from other events or sessions, and by categories. See also Names Only Events.



- **Creating and using templates** – templates used for all Howells, all SSTs and can be used for Mitchells. Managed under *Setup | Movement Templates*. Can create here or use Excel to make a CVB file but the CSV file must be in exactly the right format and with no blank rows or columns. Use the test button to ensure pairs / boards aren't encountered more than once.

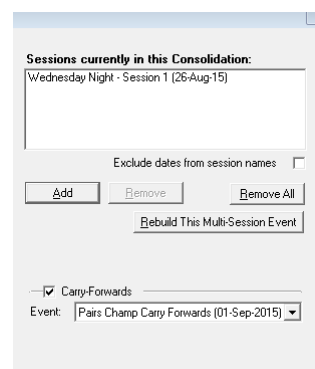
- **Spurious results in your session** – (typically sent by one table from a previous session) can be erased under *Advanced | Support* by deleting results by Bridgmate ID, or manually deleting the wrong result in the main program and deleting inaccessible ones under *Advanced | Support | Delete Out-of-Range Results*.



- **Miscellaneous Bridgmate functions** – under *Setup | Advanced | BWS Functions* – Reset all Bridgmates, Update Bridgmate Preferences.

## Consolidating sessions

- Across-the-field
- Traditional multi (with full factoring) vs ladder (no factoring – okay for consolidating identical sessions)
- Eclectic – works on percentages, and selected players who play in a minimum number of sessions. Can be done on pair or individual basis.
- Barometer – session consolidation ideal for producing cumulative results after each round not just each session (can also be run under Events)
- Multi teams – consolidate identical SST sessions to produce an event of longer matches, and can also convert to VPs and masterpoint on wins



basis

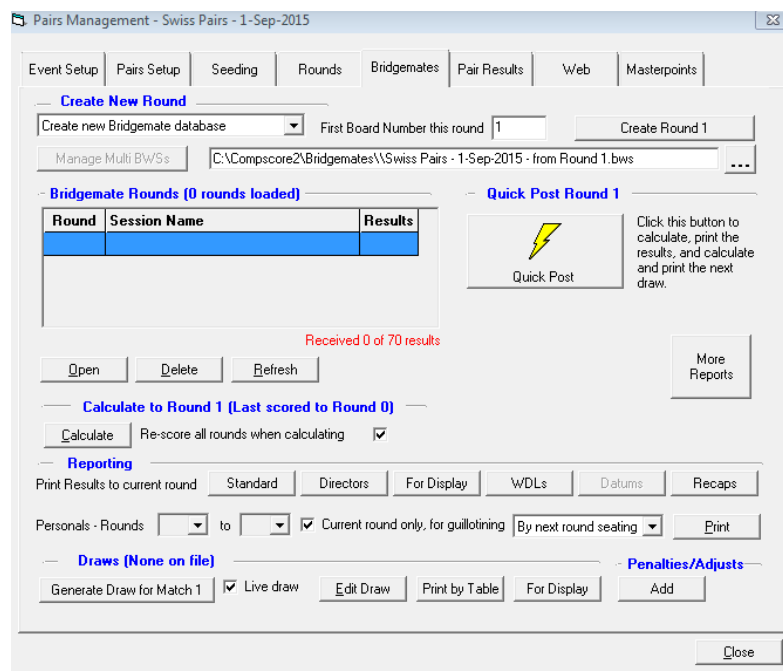
- Carry-forwards (use Names-only event to set up the pairs, enter the carry forward to this event, then attach this event to the Multi); can also send qualifying session names and carry-forwards from the last page of the Multi or ATF.

## Events

- Distinction between Sessions and Events
- Swiss Pairs/Teams Event tab-by-tab flow –
  - Setup – Categories, Session/Matches pattern (e.g. 4-3 for 2 sessions with 4 matches morning and 3 matches afternoon), deal files, masterpoints and congress acceleration, template for non-Swiss
  - Pair/Team Setup – quick entry with no mouse required, starting typing name at the ABF No box, can be imported from CSV, stationary seating available (assign table with existing field, not outside range), import from another event, test for duplicates, update masterpoints
  - Pair/Team Seeding – seeding by masterpoint, then tweaking using right-click options. Can assign categories here also and can be all categories equal, or a graded style. Also print and edit first Swiss draw here, median list.
  - Bridgemates tab to run the event – see below
  - Web tab for web site results
  - Masterpoints tab for masterpointing (can produce file for the Masterpoint Centre or merge the event's masterpoints to your club masterpoints area)
- Running the event
  - Concept of BWS files – any match can use a new BWS file or you can use the same BWS file for subsequent matches as long as you don't repeat board numbers. Must use same BWS file for whole session if also running a side movement. If using a new BWS file, the BCS has to have been closed, and will need to be relaunched after the new match is opened. Using the same BWS files means the BCS must not be closed, and the act of opening the new match will send the details to the Bridgemates. If things go wrong, simplest thing is to delete the new match, close the BCS, create the next match with a new BWS file, open then launch.
  - Import results in usual way, and when all in, close the Match form, and click *Quick Post*. See *Setup | Preferences Congress Directors | Quick Post* to manage what steps Quick Post will do. This will produce the draw (if a Swiss event) plus whatever else you have nominated.

The screenshot shows the 'Event Setup' tab of a software interface. It contains various input fields and checkboxes for configuring an event. Key fields include 'Event Name', 'Event Date', 'Number of Categories', 'No. of Rounds', 'Boards per Round', and 'No. of Sessions'. There are also sections for 'Masterpoints Information' and 'Bridgemates Settings'. At the bottom, there are buttons for 'Print QBA Levy Statement', 'Set Colour', 'Apply', and 'Cancel'.

- Printing personals – these can be set to print for guillotining so if you're careful when slicing they will be in the right order. For pairs events, you can choose that order as: next round seating (this is the usual one), last round seating (used for the match before lunch) and pair number order (after last match of the event).
- Create the next match with new or existing BWS database (see above), first nominating the first board number if Swiss.
- Other concepts
  - Carry overs and dropouts
  - Triangles in Swiss teams
  - Mixture of manual and Bridgemate scoring in Teams
  - Blank pairs / teams
  - Concept of “names only event”
  - Pair datums in teams
  - Substitutes in Pairs and Teams



## Miscellaneous

- Using CS2 with external displays (including generic report)
- Launching 2<sup>nd</sup> instances of CS2
- Handicapping
- Membership
- Monthly masterpointing
- Random data generation option
- Back-importing to CS2 from web site CSV file – any session can be importing from the web site CSV file – select *File | Import | Compscore2 Session CSV File*