

CONVERTING FROM COMPSCORE2 TO COMPSCORE3

Compscore3 is very similar to Compscore2 in terms of user experience – we have gone to great lengths to ensure that users do not need to re-learn the program. If your directors can use Compscore2, then they will have no problem with Compscore3.

The main reason for the change is that the programming language used for Compscore2 is near its end-of-life, and there will come a time when future versions of Windows will not be able to run it. Other benefits of the new development language include better stability and efficiency, especially in terms of cloud activity (uploads, downloads etc), and many processes are considerably faster than before. Also, the new version has given us the opportunity of smartening up the interface and adds a dash of colour here and there!

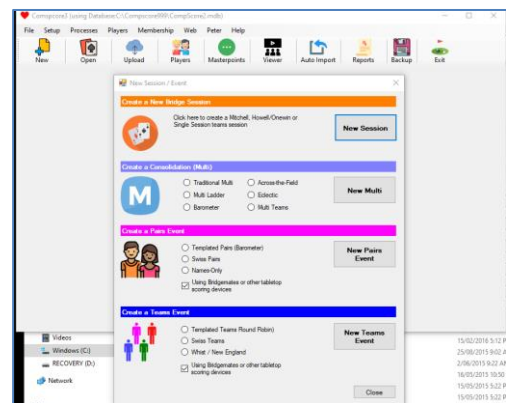
One good thing about Compscore3 is that it uses the same database structure as Compscore 2 (Microsoft Access database – same as BWS files). This means that users can hot-swap between Compscore 2 and Compscore 3, even part way through a session or event. For example, if you use Compscore 3 to start a session but part way through you encounter a problem and cannot continue, just open that same database using Compscore2 and all existing data will be retained.

WHAT'S DIFFERENT IN COMPSCORE3

1. Sessions and Events

The biggest difference operationally – and one that all users will immediately notice – is that the line between Sessions and Events has been blurred in the user interface, though the firm distinction between Sessions and Events remains as before.

All Sessions, Events and Multis are now opened from the **Open** button and created with the **New** button, whereas in Compscore2, there were different ways to open and create Sessions, Events and Multis.



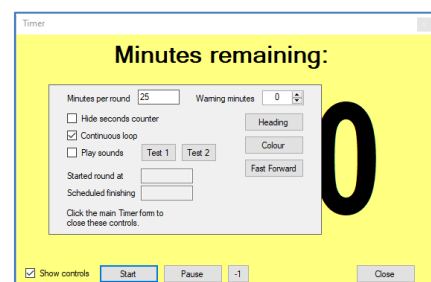
That change means that when creating new Sessions / Events /

Multis, there is an intermediate form so that the user can nominate the type: Session, Multi, Pairs Event or Teams Event. This also means that when opening a Session / Event, a full list of all Sessions, Multis, Pairs and Teams Events is shown, but can be filtered to show just one type and that filter is remembered as the default.

Date	Session/Event	Type	Tables	Masterpo...
Wed 25-Nov-20	Wednesday Night - Section A	Howell/Onewin	3	Green
Wed 25-Nov-20	Wednesday Morning - Section B	Straight Mitchell	9	Green
Wed 25-Nov-20	Wednesday Morning - Section A	Skip Mitchell	8	Green
Tue 24-Nov-20	Tuesday Afternoon 24 Nov - 1 Dec	SwissPairs	6	Green
Tue 24-Nov-20	Tuesday Morning - Section B	Share & Bye Mitchell	8	Green
Tue 24-Nov-20	Tuesday Morning - Section A	Share & Bye Mitchell	8	Green
Mon 23-Nov-20	President's Trophy - Week 3	Howell/Onewin	13	Red
Mon 23-Nov-20	President's Trophy Outrights	Multi - Barometer		Red
Sat 21-Nov-20	Saturday Afternoon - Section A	Howell/Onewin	7	Green
Fri 20-Nov-20	Friday Morning - Section B	Share & Bye Mitchell	10	Green
Fri 20-Nov-20	Friday Morning - Section A	Share & Bye Mitchell	8	Green
Thu 19-Nov-20	Thursday Afternoon - Section A	1.5 Table Appendix	13	Red
Thu 19-Nov-20	Thursday Morning - Section B	Share & Bye Mitchell	6	Green

2. Timer

The time more sophisticated, with separate menu selections for minutes per rounds vs set finishing time, and some extra features to make it suitable for club sessions like optional sound files for warnings and round moves.



3. Membership module

The membership module no longer has a welcome letter or general letter to members, and Membership Setup options are now managed under the Options area.

4. Teams events

In Teams events, there is no longer a Substitutes area. Substitutes are recorded through Datums Management area.

5. Enhanced report viewer

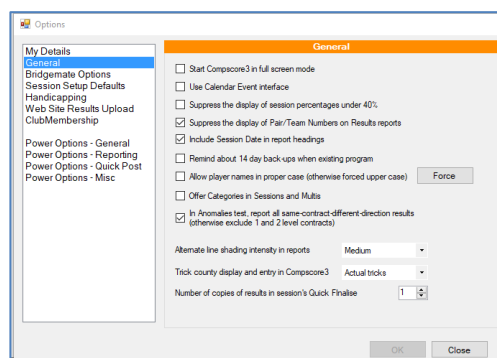
The Viewer (previously referred to Auto Previewer) can now create pages from RTF documents (a format support by MS-Word), and when auto-displaying multiple documents, each has a different coloured background to help differentiate them. With RTF compatibility, there's the ability when creating a generic display report to use different colours and fonts.

6. Live Results

The live results display only shows one section, so for multiple sections, open multiple Live Display forms.

7. Setup options

These are all located on one multi-tab form, as pictured.



8. Other minor changes

- More intelligent resizing of forms where more rows are visible, and some grids can have row heights re-sized.
- Reports form is accessed via a separate Reports button (previously under File menu).
- Options are now centralised under Setup | Options.
- There's a change in the ways Windows works. When you click on a control (e.g. a button) on a form that is not in focus, the first click only focuses that form, and a 2nd click will be required to fire that button.
- Scoring for Individual events is no longer offered. This may be added in a later build. Likewise NZ masterpointing and other NZ localisation might not be complete.
- The "Program" interface is no longer offered. (This was a way of grouping sessions and multis under one umbrella.)
- Gold masterpoint files are created under the usual Masterpoint Wizard (select Gold from the dropdown). In Compscore2 there was a separate menu option.
- Some menu items have been relocated
- The masterpoints wizard processes are divided into 4 screens (previously 3).

INSTALLING COMPSCORE3

Install Compscore3, preferably using the default folder which is C:\Compscore3.

Enter your name and licence number. Note that this is different from your Compscore2 licence number and will be in the form of one letter followed by six digits e.g A-123456. Until you enter a valid licence number, Compscore3 will be in evaluation mode.

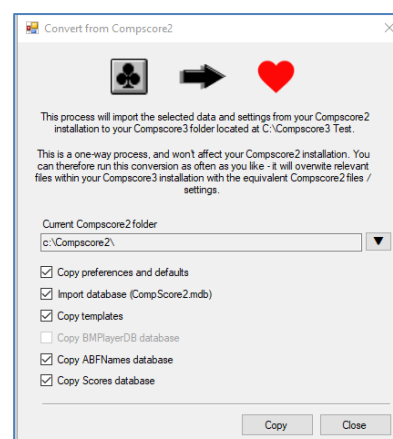
CONVERTING FROM COMPSCORE2

You will be asked as part of the initial setup if you wish to convert an existing Compscore2 installation. If so, first make sure that your Compscore2 program build is no earlier than 1 September 2021. If it is older, download and run the latest Compscore2 upgrade.

On the next screen, you can choose what parts of your Compscore2 installation you wish to convert. We recommend you select the default options.

Click **Copy**. This will bring across your latest database, all your user preferences, templates, and the latest ABF Player Names and Scores database.

If you need to run this Converter again, it is located under the **File** menu.



OTHER STEPS WHEN CONVERTING

If you are using an Altosoft or Bridge Australia web site and/or importing your deal files into sessions, you will need to change where you copy the deal files to. Under Compscore2, they were copied to C:\Compscore2\Web\BRI Files. With Compscore3, they need to be copied to c:\Compscore3\Web\Deal Files.

FUTURE COMPSCORE3 PROGRAM UPDATES

Program update downloads will no longer be separate from new installation downloads. The only download available will be the full installation, simplifying things for everyone. (This is the same way Bridgmate Control Software updates have always worked.)

REPORTING ERRORS BACK TO US

Compscore3 has been used in some clubs, and by some tournament directors for many months, so we are confident that things will run smoothly.

However, if you encounter a crash, it will look like this.

Click **Details** and some text will appear below. Use the right mouse click to copy and then paste this into an email or other document and email it to us, stating what you were doing at the time.

And remember that hot swapping is available, so if you're running a session with Compscore3 and encounter a problem, simply close Compscore3 and open the session / event with Compscore2.

For Support contact Peter Busch at peter@altosoft.com.au or on 0438 336 632.

