

“NO PLAY” VS AVERAGE

When a board can’t be played at a table because of time constraints, there are two methods to score it.

RECORD AN AVERAGE

The first is the correct one – to record an average. This would be entered at the table by the Director after accessing the TD Menu.

It would normally be 50% / 50%, though in extreme situations you may choose to award a non-balancing average where one pair was at fault and the other wasn’t. However, if you do deviate from 50/50, consider the consequence – it could create an unfortunate precedent for your club. A better solution in those cases of habitually slow pairs is a warning, and then to apply a penalty to their overall score.

ENTER “NO PLAY” ON THE BRIDGEMATE

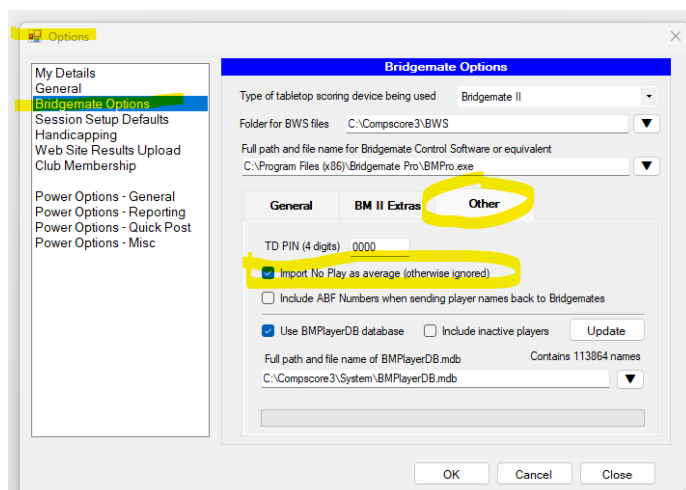
Pressing the “0” key when the Bridgemate asks for the contract will record a “No Play” for that board. This logs “No Play” in the BWS file.

What happens next depends on your Compscore3 setting on the **Options | Bridgemates | Other** tab, as pictured.

You can either have Compscore3 ignore the result completely (untick the box), or to record it as a 50/50 average (tick the box).

If Compscore3 ignores the result completely, it will result in the pair having played one fewer board than everyone else, and the normal factoring will apply to gross up their total matchpoints. This effectively awards their session average to the unplayed board in the same way as would apply when some pairs sit out and others don’t as a result of a curtailed movement.

If Compscore3 converts the “No Play” to a 50/50 average, it will be scored the same as is the Director entered a 50/50 average at the Bridgemate.



Remember that the correct policy under the Laws of Bridge is to award an average (i.e an artificial score of 40%, 50% or 60%).