

## Using Bridgemate3 with Compscore3

This document describes what needs to be done for Clubs using the newly released Bridgemate3's with Compscore3.

We recommend that users read the Bridgemate manual which can be [downloaded from the Bridgemate web site here](#).

Next, ensure you have the latest builds:

- Compscore3 (07/11/25 build or later) – [click here for download page](#)
- Bridgemate Control Software (BCS) – currently 4.1.17 (check **Help | About** in the BCS) – [click here for download page](#), or check [this page](#) for the latest build. When you install this version, the Bridgemate3 driver will also be installed if needed.

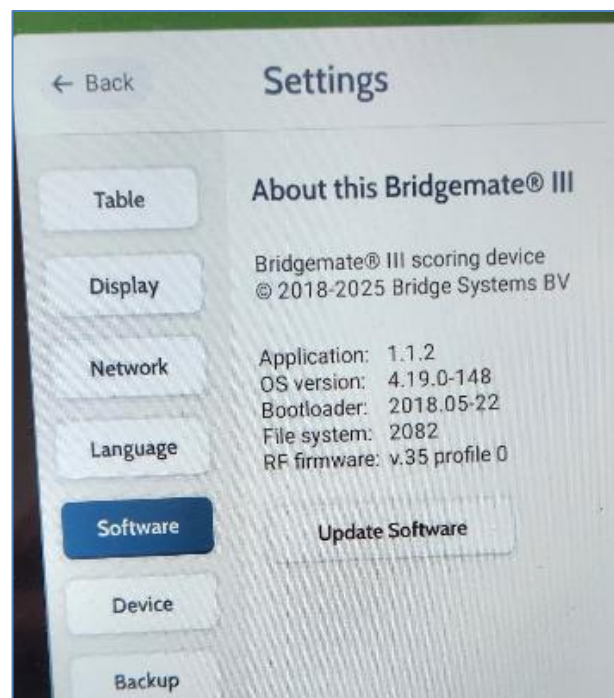
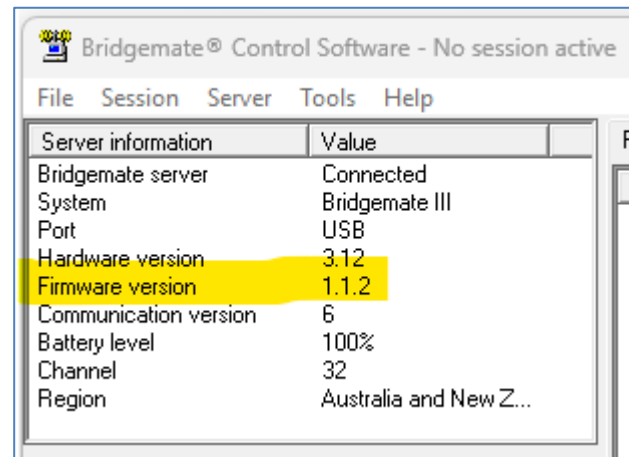
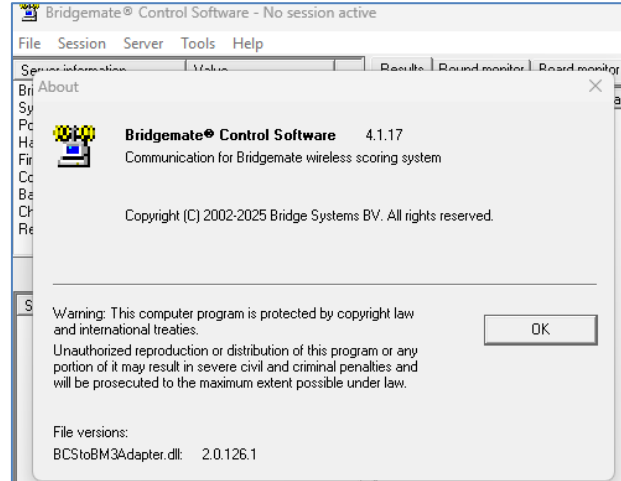
Check that the devices have the latest firmware. The server and Bridgemate3's are shipped with the latest, but updates are released from time to time.

- Bridgemate 3 server firmware – currently 1.1.2 (check the server firmware version on the top left side of the BCS screen)
- Bridgemate3's – currently 1.1. 2 (check under **Settings | Software** on the Bridgemates)

Updates may be frequent, so keep your eye out for Bridgemate3 and Compscore3 updates.

To install firmware updates, you need to set up a club account with the Bridgemate web site here [www.bridgemate.com/app/club-login](http://www.bridgemate.com/app/club-login). You'll need this account to register your server and Bridgemate3's and to update their firmware. This requires a wi-fi connection – see **Chapters 20 and 21** of the manual for registering your devices, and **Chapter 23** for firmware updates.

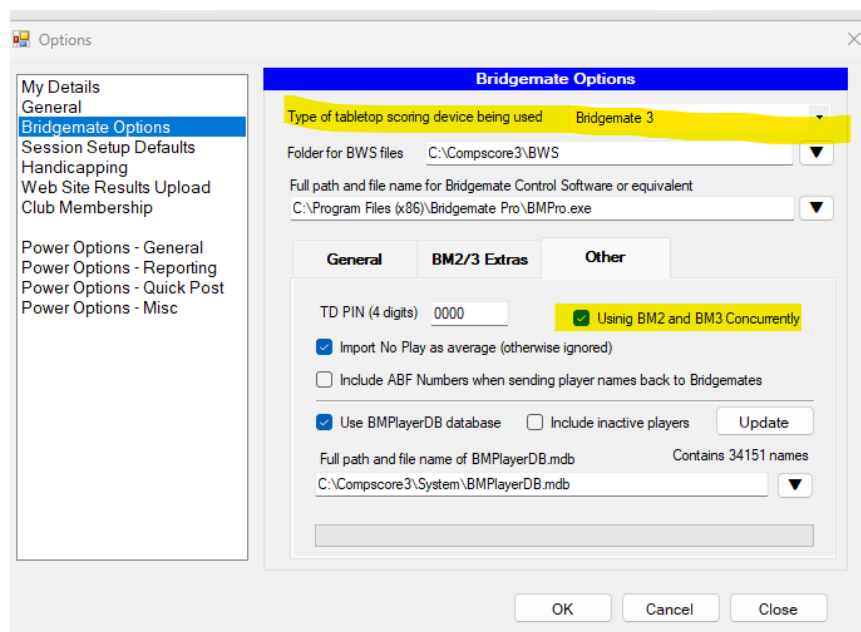
You can check firmware versions of the Bridgemate3 and server via the Club Login page once you've set up your Bridgemate account and registered your devices. It will also show you if there's any updates available



## Using Bridgemate3's with Compscore3

Whether you're using BM3's exclusively or will be mixing Bridgemate2s and 3s in the same session, choose Bridgemate3 from the dropdown at the top of the page.

If you plan to run BM2's and BM3's in the same session, you will also need to tick the checkbox under the **Other** tab as pictured.



## Differences you will notice

The Player name entry process is different with Bridgemate3's compared to Bridgemate2's.

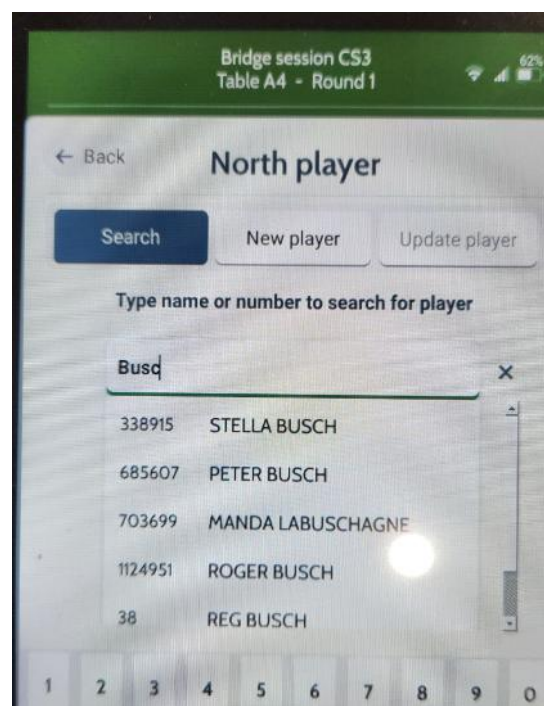
When entering players at the start of a session, you type the first few letters of their name and choose the correct name from the dropdown. Alternatively, you can type the ABF Number or Club Member Number (see footnote below).

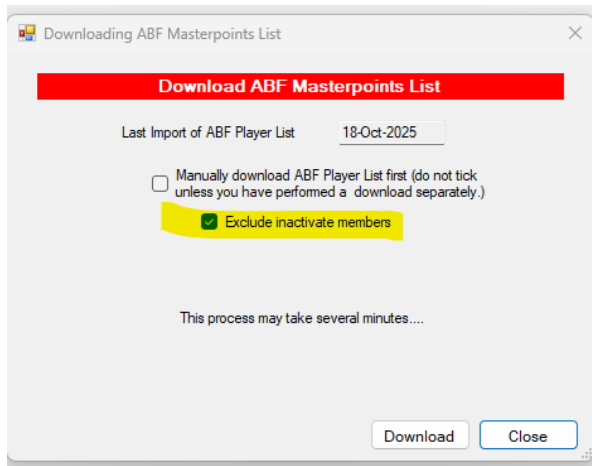
If you have a visitor, you can click the **New Player** button on the Bridgemate and record their ABF Number and Name.

If you're club is affiliated with the ABF or you are a Tournament Director, it is best to upload the ABF Database to the Bridgemate server, and all those names will appear in the search list along with your club members. This upload uses the **BMPlayerDB.mdb** database that was used by Bridgemate2's but needs to be uploaded to the Bridgemate server manually. In the Bridgemate Control Software, click **Server | Player Management** – see pic below – then click **Upload Players to Server**. This list remains in the server until erased, but can be updated at any time, so this process should be performed whenever you update your ABF Master List – typically once a month.

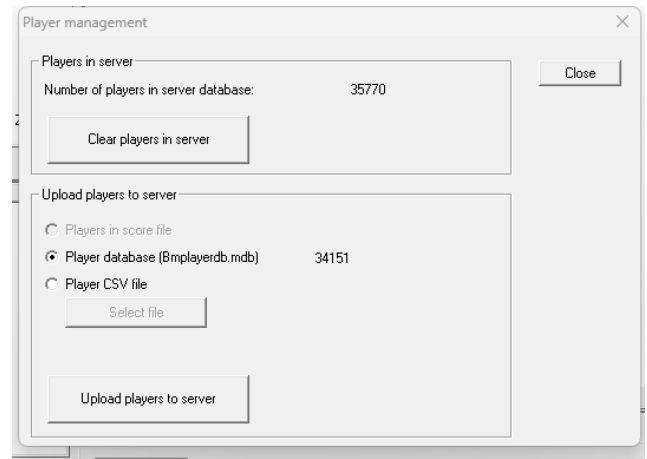
It's probably best to just import the active players when you run the Update process in Compscore3, otherwise the search dropdowns can contain many superfluous names.

**Footnote:** The name selection process can be cumbersome when you have loaded the entire ABF master list, especially when entering common surnames. In these cases, you can enter both the given name and surname into the Search box or enter the player's full ABF Number. Club member numbers can also be entered here.





**Compscore3 ABF List Download screen**



**Bridgemate Control Software  
server upload screen**

C:\Documents\Bridge Club\Compscore3\Printed Documentation\UsingBridgemate3withCompscore3.docx